

OASIS
— spaces for life —

Oasis Realtech Pvt. Ltd. (UPRERAPRM1696)

Corporate Office: A-77, Sector 2, Noida (U.P.)
E: info@oasis.in • Website: www.oasis.in

Site Address: GH-01, TS01B, Sector- 22D, Yamuna Expressway, G.B. Nagar (U.P.), India
Project RERA NO: UPRERAPRJ6908 (Phase-1)

*Quenching the grand
love for luxury*

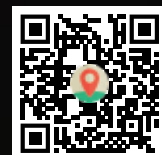
OASIS 
GrandStand

Funded by :
SWAMIH
INVESTMENT FUND I

Managed by :
FUND MANAGER

 **SBICAP**
VENTURES LTD.

**Scan to
reach**



*Simple investment.
Grand living.*



*Simple investment.
Grand living.*

Grand living holds a different meaning in everyone's lives. For some, grandness is about living a luxurious life; whereas some see grandness in deriving good profit from a great investment. Well, Oasis Grandstand is designed to meet everyone's desire.

Located on the Yamuna Expressway in Greater Noida, Oasis Grandstand offers a state-of-the-art architecture with elegant interiors and jaw-dropping ambience. This ever flourishing profitable property aims to bring unsurpassed joy and glory to your life.

So, suit up to enjoy your type of grandness.

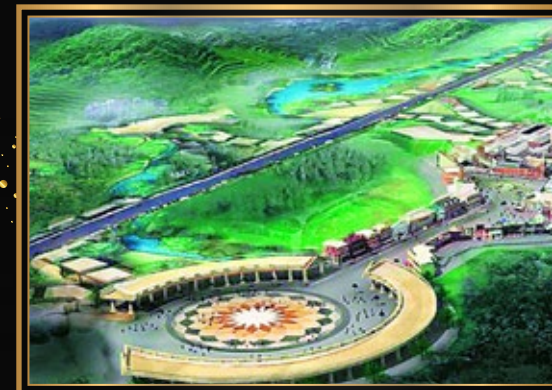
*A Grand location
for a reason*



*A Grand location
for a reason*



Film City 8 Mins. Drive Away



JEWAR
INTERNATIONAL
AIRPORT



15 MINS. DRIVE
AWAY

F1 Track 2 Mins. Drive Away



Glamorous Film City, classy F1 Track, and upcoming elegant Jewar Airport; all that adds up to a luxurious lifestyle is just few mins away from the location. After-all, we know grandness is not just about the ambience but comfort and experiences too.



*Amidst equally
Grand locales*

*Amidst equally
Grand locales*

Oasis Grandstand makes you feel like a king or queen not only within the premises but also outside. The project is planned on one of the most prime locations that offers a perfect blend of comfort and class. From upcoming industries to shopping malls to the glamour world to top-notch sports destination, you will have easy access to all. That is why we say, we don't just aim to match up to your class but strive to elevate it.

OASIS
GrandStand
2,3,4 BHK & Penthouse, Yamuna Expressway



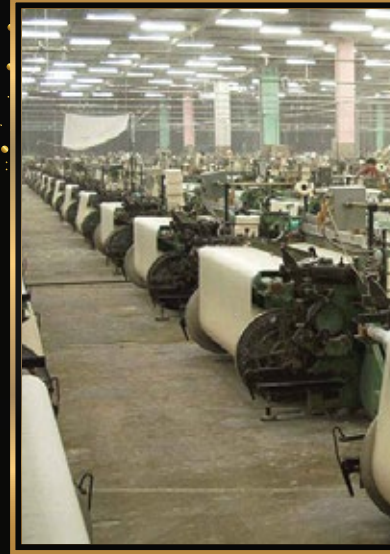
Location is adding to the Grandness

Electronic Park



Upcoming INDUSTRIES

Apparel Park



Vivo Mobile
Manufacturing Unit



Noida International University



Hospitality Industries



Logistic Hub



Offering a world where grandness is redefined... where success is invented... where every happiness comes easy... where life just seems simply beautiful.

Patanjali Food Park



Doxin



Toy City



Amusement Park



Galgotias University

Gautam Buddha University



EDUCATION & Entertainment



Metro Coach Factory



Furniture Hub



*Experience the
Grand view*



*Get ready to Celebrate
a Grand Life*

Imagine a life, where waking up to greenery and fresh breeze is normal, where exercising seems fun, where you dive into a pool of happiness to relax from a hectic day, and where your interest towards a particular sport is always encouraged. No, this is not a dream. This is a reality with Oasis Grandstand.

Oasis Grandstand makes sure to offer everything that makes your life grand and enables you to celebrate it every single day.

*Get ready to Celebrate
a Grand Life*



Amphitheatre



*Everything
is Grand here*

Wake-up with a smile. Train. Play
and win all life games. Celebrate.
Repeat.

Gymnasium

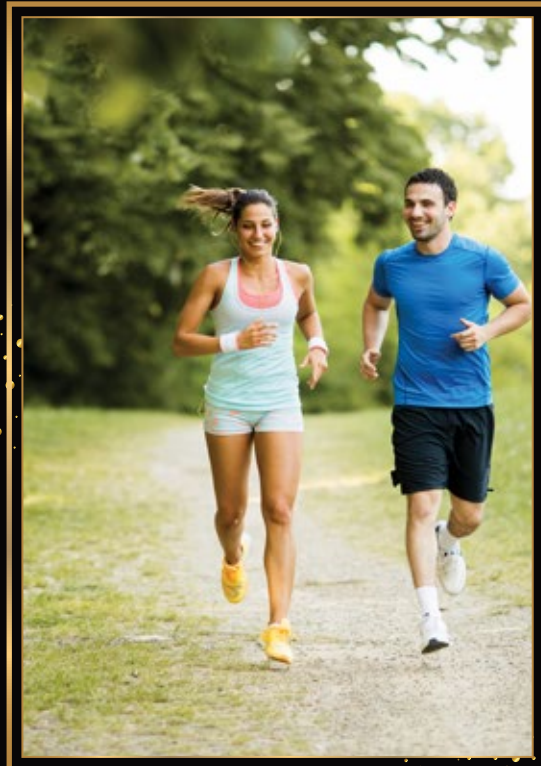


Basketball Court



Badminton Court

Jogging Tracks



Billiards/Pool

Banquet Hall



Tennis Court



Exquisite detailing for that perfect Granduer

FINISHES

- Internal wall painted with pleasing shades of OBD
- Permanent weather coated heat reflective texture paint/ equivalent on external wall
- Glazed/Ceramic tiles upto 7 ft. Height, wash basin, EWC
- Pre-polished granite platform with stainless steel sink, dado up to 2"-o" height above platform in ceramic glazed tiles in Kitchen

FLOORING

- Designer floor tiles in drawing & dining area
- Vitrified tiles in bed rooms
- Anti-skid ceramic tiles in kitchen and toilets
- Ceramic tiles in balconies
- Marble/Kota stone/ tiles in Corridors, Staircase and Lobbies

FIRE FIGHTING

- Fire Fighting arrangements as per norms

DOORS AND WINDOWS

- Wooden door frames
- Pre-laminated flush doors/skin moulded shutters
- All external doors and windows of powder-coated aluminum/UPVC

STRUCTURE

- Earthquake resistant R.C.C. framed structure in accordance with the norms

ELECTRICAL

- Modular switches and sockets
- Copper wiring





YAMUNA EXPRESSWAY

Time to switch on the grand lifestyle mode

OASIS 
GrandStand
2,3,4 BHK & Penthouse, Yamuna Expressway

Site plan



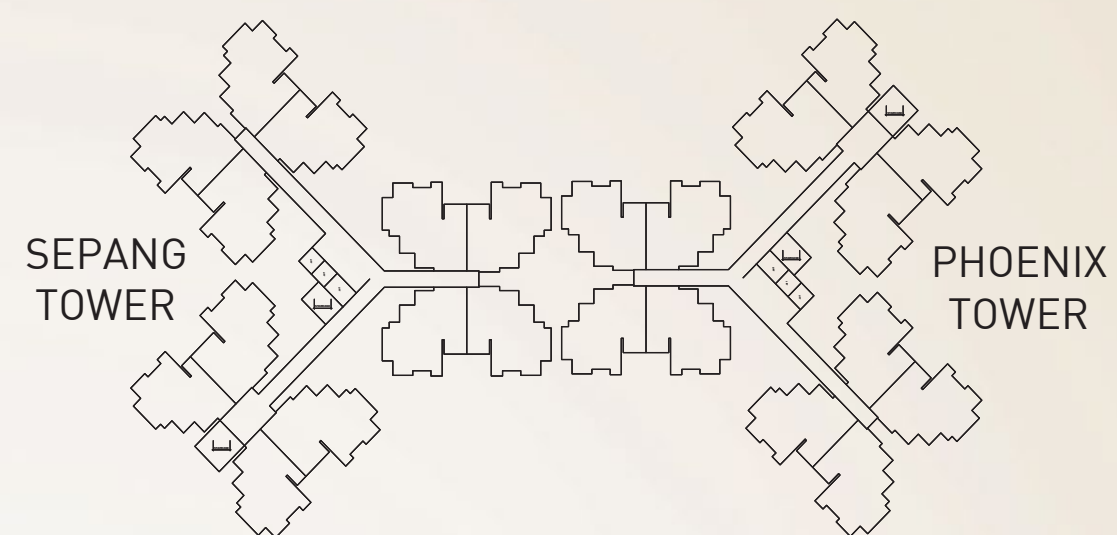
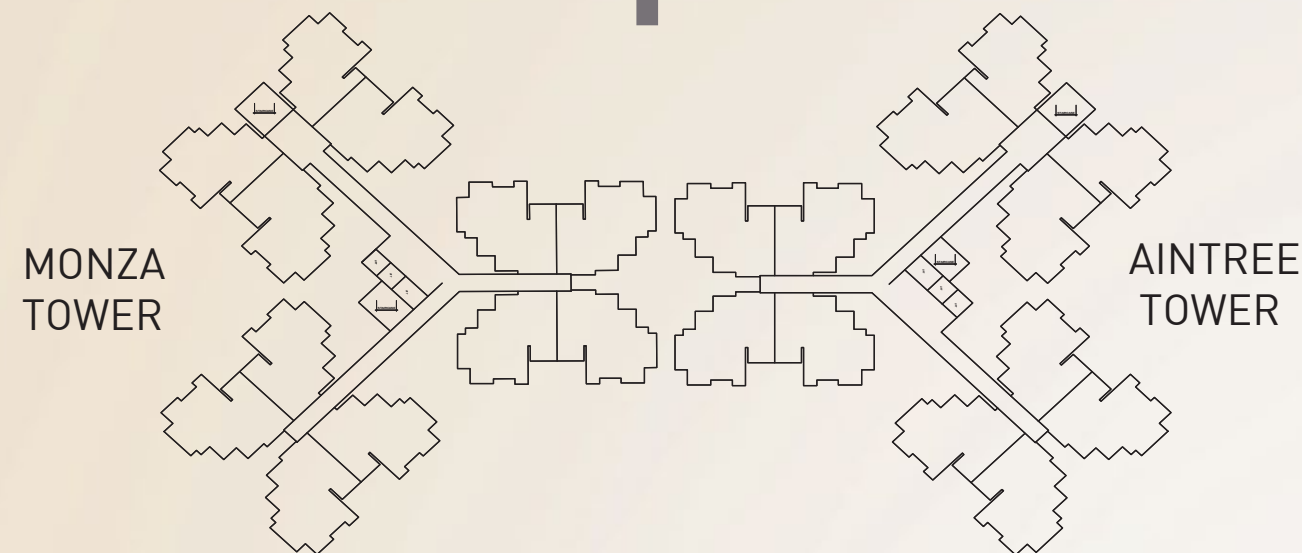
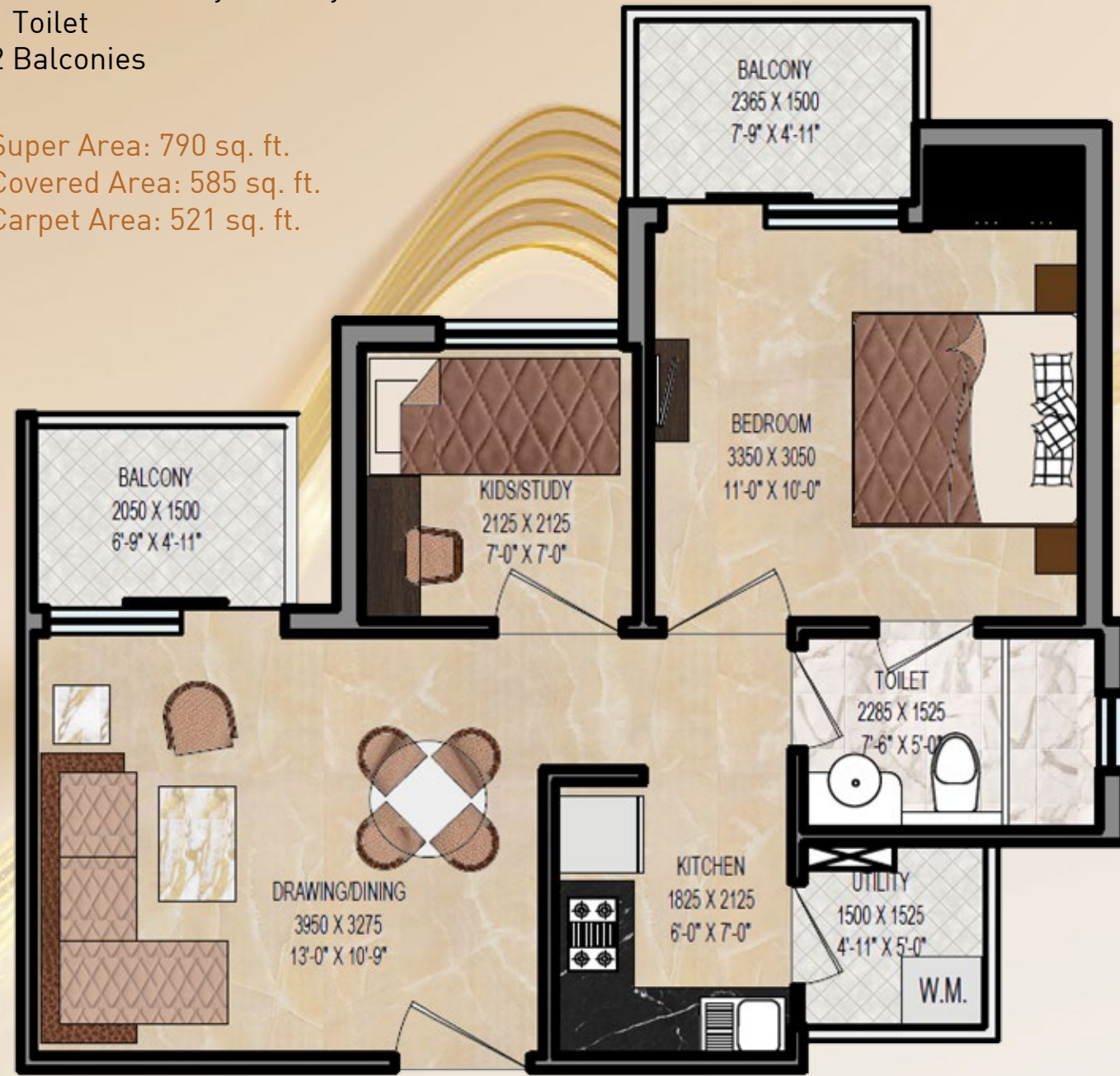
Legend:

1. Grand Floating Steps from Club
2. Pool Side Party Area
3. Linear Water Feature
4. MS Screen Partition with Club Signage
5. Floating Steps to Pool Deck
6. Pool Deck with Loungers
7. Changing Rooms
8. Open Showers
9. Main Swimming Pool with Infinity Edge
10. Kids' Pool
11. Feature Wall
12. Water Feature Along Curvilinear Pool Knife Edge
13. Walkway Through Pergola
14. 3.0M Wide Curvilinear Pathway with Dedicated Jogging Track
15. Multipurpose Lawn
16. Pathway to Towers
17. Walkway Through Portals
18. Grand Central Lawn
19. Open Air Theatre
20. Floating Gazebo in Lotus Pond
21. Yoga/Meditation Pavilion
22. Aroma Garden
23. Outdoor GYM
24. Outdoor Sitting Area
25. Reflexology Garden
26. Peripheral Plantation
27. Skating Rink
28. Half Basketball Court
29. Tennis Court
30. Childrens' Play Area
31. Childrens' Running Track
32. Sitting Under Pergola
33. Childrens' Play Lawn
34. Badminton Courts (2 Nos.)
35. Thematic/Plumeria Garden
36. Sculpture Garedn
37. Maze Garden
38. Cricket Practice Net
39. Steps to Ground with Pergola Above Karthikeyan Club
40. Pool Deck with Loungers
41. Main Swimming Pool with Infinity Edge
42. Kids' Pool
43. Decorative Water Spouts
44. Pool Knife Edge with Jet Nozzles in the Basin Below



- 2 BHK + 1T (790 sq. ft.)
- 1 Bedroom
- Drawing/Dining
- 1 Kids' Study
- 1 Kitchen + Utility Balcony
- 1 Toilet
- 2 Balconies

Super Area: 790 sq. ft.
 Covered Area: 585 sq. ft.
 Carpet Area: 521 sq. ft.



- 2 BHK + 2T (920 sq. ft.)
- 2 Bedrooms
- Drawing/Dining
- 1 Kitchen + Utility Balcony
- 2 Toilets
- 2 Balconies

Super Area: 920 sq. ft.
 Covered Area: 682 sq. ft.
 Carpet Area: 623 sq. ft.

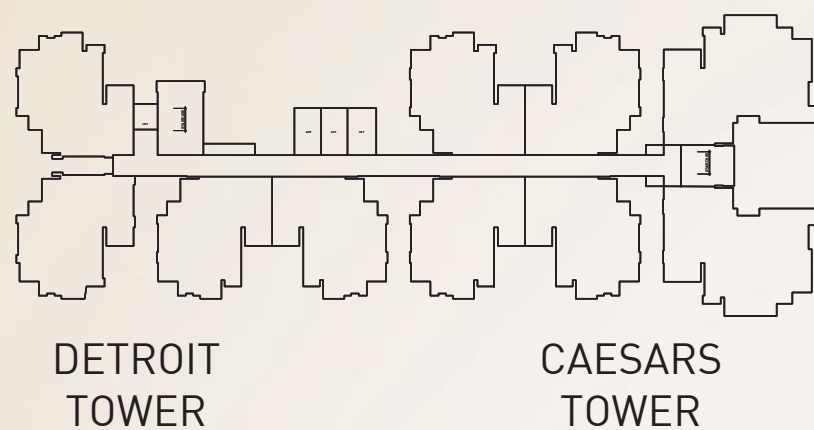
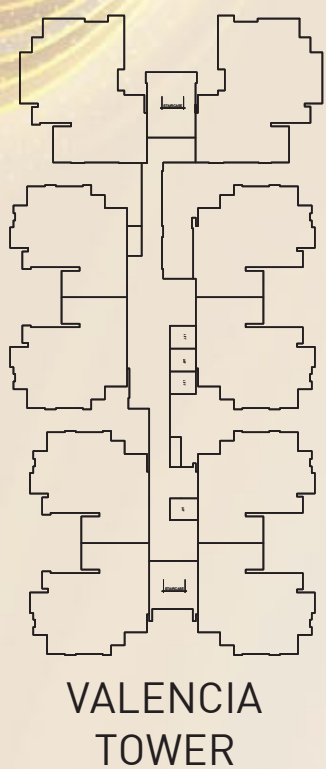
2 BHK + 2T (1045 sq. ft.)
 2 Bedrooms
 Drawing/Dining
 1 Kitchen + Utility Balcony
 2 Toilets
 3 Balconies

Super Area: 1045 sq. ft.
 Covered Area: 774 sq. ft.
 Carpet Area: 703 sq. ft.



3 BHK + 2T (1405 sq. ft.)
 3 Bedrooms
 Drawing/Dining
 1 Kitchen + Utility Balcony
 2 Toilets
 2 Balconies

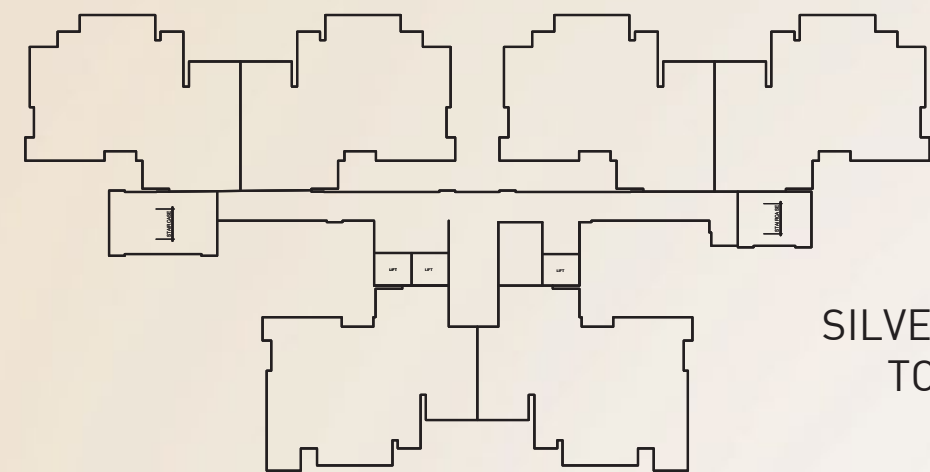
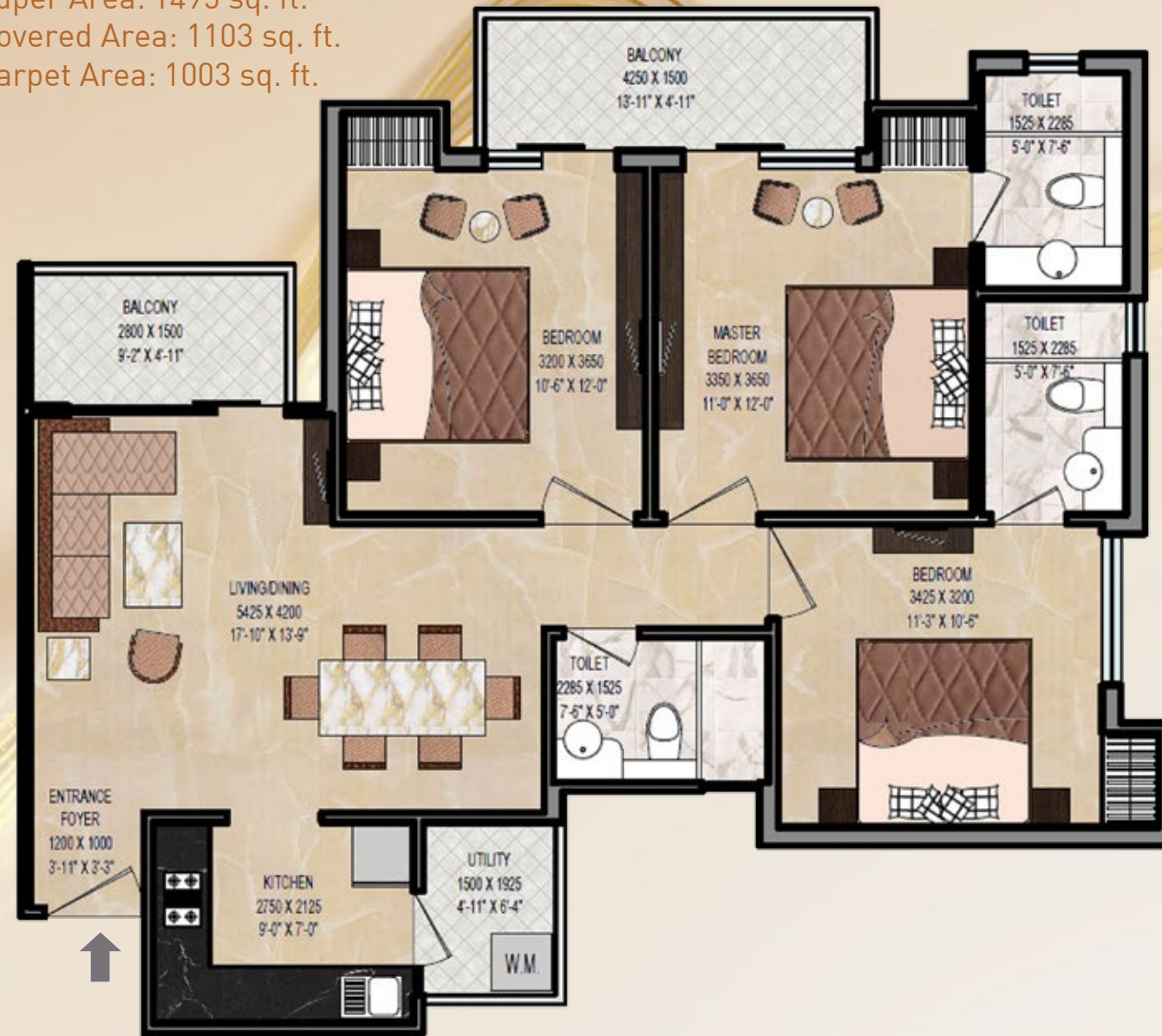
Super Area: 1405 sq. ft.
 Covered Area: 1042 sq. ft.
 Carpet Area: 938 sq. ft.



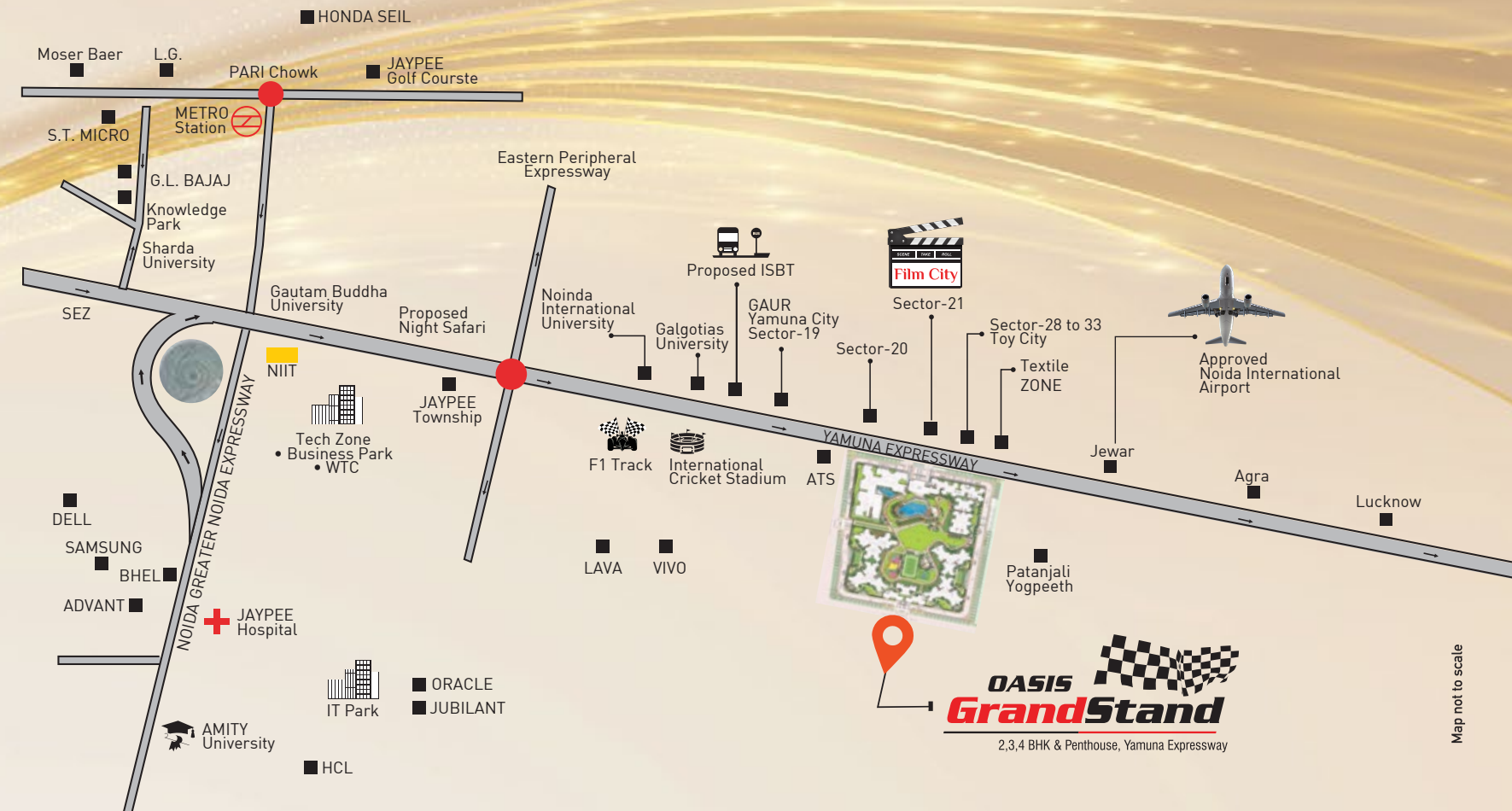
Location Map

- 3 BHK + 3T (1495 sq. ft.)
- 3 Bedrooms
- Drawing/Dining
- 1 Kitchen + Utility Balcony
- 3 Toilets
- 2 Balconies

Super Area: 1495 sq. ft.
 Covered Area: 1103 sq. ft.
 Carpet Area: 1003 sq. ft.



SILVERSTONE TOWER



Architect Structure Consultant



All specifications, designs, layout, images, conditions are only indicative, and some of these can be changed at the discretion of the builder/architect/authority. These are purely conceptual and constitute no legal offerings. 1sqm = 10.764 sq. ft.